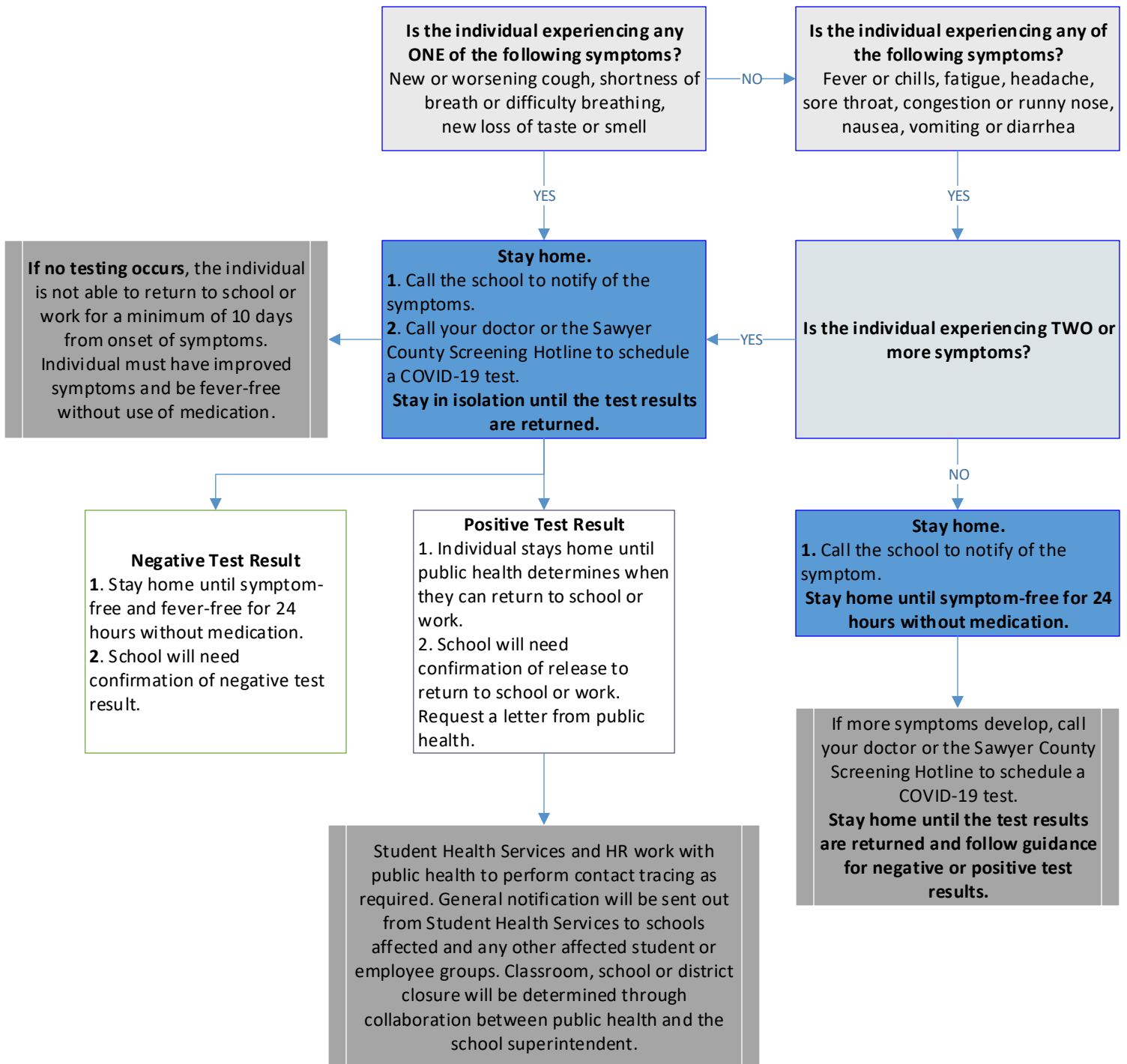


STUDENT OR STAFF WITH SYMPTOMS



Sawyer County COVID-19 Screening Hotline: 715-934-4518 • Sawyer County Public Health: 715-634-4806 • COVID-19 Questions & Resources: 2-1-1

This guidance is intended for understanding when someone is well enough to attend school or work. Call your doctor if you have concerns about any illness that is worsening. Seek emergency care if there is difficulty breathing.

STUDENT OR STAFF WITH SUSPECTED OR KNOWN EXPOSURE

